



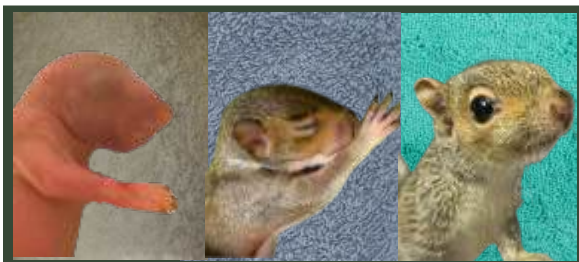
SO YOU FOUND A BABY SQUIRREL...

AWARE Wildlife Center
4158 Klondike Rd
Stonecrest, GA 30038
www.awarewildlife.org

DO ANY OF THE FOLLOWING APPLY TO THE SQUIRREL?

- The baby is injured, was caught by a cat, or was caught by a dog.
- The mother was seen being removed, relocated, or killed.
- There are flies, fleas, maggots, etc around or on the baby.
- The baby is skinny, dehydrated, or barely responsive.

YES



CONTACT THE AWARE HELP DESK

[AWAREWILDLIFE.ORG/CONTACT](http://awarewildlife.org/contact)

or find another rehabber at
awarewildlife.org/rehabbers

NO

HAS MOM RETRIEVED
HER BABY AFTER 2 DAYS
OF TRYING?

YES

YOU DID IT!
CONGRATS!!

YOUR BOX MAY NEED AN AWNING



If the renesting box will be in full sun or getting light rain, you need an awning/roof.

- Position the awning so mom can still easily access the baby.
- The awning may make mom more hesitant to return so it should ONLY be used when necessary.

Do not renest in stormy weather! Take baby inside until storms pass.

NO

THIS IS A JUVENILE SQUIRREL YOU
DO NOT NEED TO INTERVENE

DOES THE SQUIRREL...

- Have an erect fluffy tail?
- Have a body longer than 4" (not including the tail)?

YES

NO

THIS IS A BABY SQUIRREL &
NEEDS TO BE RENESTED

STEPS TO RENEST...

FIRST

- Put baby in a secure box large enough they can't crawl out.
 - Any sort of cardboard box will do.
 - You may need an awning- see yellow box at bottom left.
- Provide a heat source. Either:
 - Microwave a sock filled with rice till warm; or
 - fill a Ziploc with water and warm in the microwave
- Wrap the heat source in a towel (no holes/fringe/string) so it does not burn the baby

NEXT

- Return the squirrel to a tree closest to where it was found.
- Nail the box to the tree at least 6' up by standing on a chair.
- If baby was found in gutter, nail the box to the eave of the roof.
- Play baby squirrel noises nearby to help bring mom around.

THEN

- Watch from indoors (so mom feels safe) for the next 4 hours.
- Every 4 hours, if mom hasn't returned (if possible):
 - Reheat the heat source;
 - bring in and give Pedialyte; and
 - put back outside.
- When night falls, bring inside and keep in warm, dark, quiet room. Reheat heat source every 4 hours.
- In AM, give Pedialyte, put outside, & repeat steps above for Day 2.

IMPORTANT!

- GO INSIDE or mom won't come back.
- Use a heat source. Baby MUST be warm or mom won't take the baby.
 - Warm weather isn't enough to keep the baby warm.
 - Never use a heat lamp, you can burn the animal.
- Mother squirrels typically have more than one nest so even if the original was destroyed, she will have a back-up nest to take baby to.